

43

AGRICULTURAL INSPECTOR



Annual Salary
\$45,000

Degree Level:
Associates

Job Outlook:
2%

Agricultural Inspectors scrutinize all agricultural food products and processing methods to ensure that these products are safe to eat or drink. They must also have a vast knowledge of FDA regulations so they can properly enforce the rules. If up to standard, they issue a grade. If not, they swiftly take action to ensure that the issues is remedied before contaminated products are sold.

44

WILDLIFE BIOLOGIST



Annual Salary
\$60,000

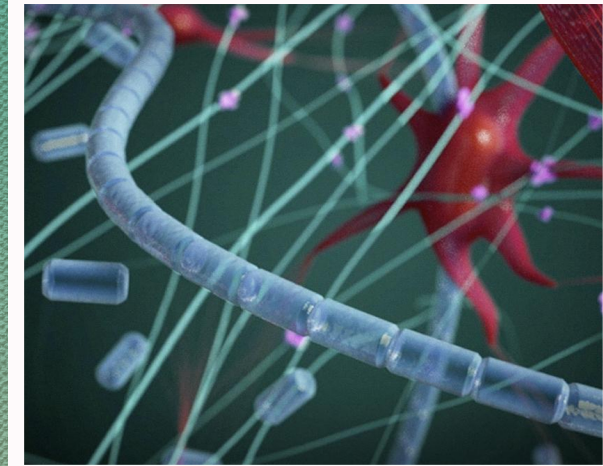
Degree Level:
Bachelors

Job Outlook:
4%

Wildlife biologists research and monitor plant and animal habitats in a given region to determine various environmental and population dynamics. During this process, they may be responsible for collecting data and looking out for repeating animal behavior patterns. Once their studies are done, they may begin formulating conclusions and publishing their results.

45

MOLECULAR BIOLOGIST



Annual Salary
\$75,000

Degree Level:
Ph.D.

Job Outlook:
8%

Whether studying cell processes and codes in humans, animals, plants or other living organisms, molecular biologists are needed in a spectrum of career fields. They utilize their knowledge of chemistry, cell physiology, genetics, physics and other sciences in their career studies.

46

FLORIST



Annual Salary
\$25,000

Degree Level:
Associates

Job Outlook:
-3%

A flower shop employee processes incoming flowers, designs floral arrangements, works with customers, and delivers flowers. Those in management positions develop advertising programs, determine what products they will sell, create display themes, and supervise employees. Managers conduct sales interviews to secure wedding, commercial, and special events accounts.

47

FOOD SCIENTIST



Annual Salary
\$62,000

Degree Level:
Bachelors

Job Outlook:
7%

Food scientists analyze nutritional content of food, discover new food sources, and research ways to make processed foods safe and healthy. Food technologists generally work in product development, applying findings from food science research to develop new or better ways of selecting, preserving, processing, packaging, and distributing food.

48

PLANT PATHOLOGIST



Annual Salary
\$60,000

Degree Level:
Bachelors

Job Outlook:
20%

Plant pathologists deal with the symptoms, causes, damage, spread, and control of plant diseases. They study disease processes and look for genetic, biological, chemical, or cultural controls for diseases of the plants we use for food and fiber.

49

FISHERY BIOLOGIST



Annual Salary
\$64,000

Degree Level:
Bachelors

Job Outlook:
4%

Fishery biologists study how the environment and other outside forces affect fish life cycles. Some focus on population control, increasing the number of endangered species and increasing overpopulated species. Others study disease, helping find medicinal cures for humans. They can work with marine fish or freshwater species.

50

FOOD PROCESS ENGINEER



Annual Salary
\$81,000

Degree Level:
Bachelors

Job Outlook:
Unknown

Food process engineers are responsible for researching and developing new and existing products, equipment and processes within various business units of a food product manufacturing company. They are also responsible for designing processing, handling, and packaging equipment and systems.